

Aussie Pumps

Aussie AB Series Direct Drive



**CLASS A
BLASTER**

AS/NZS 4233.1

No operator certification required

SPARES BREAKDOWN


BERTOLINI®
pumps
4 year warranty

AUG 2023

NEW SUPER SCUDS
stainless steel frames



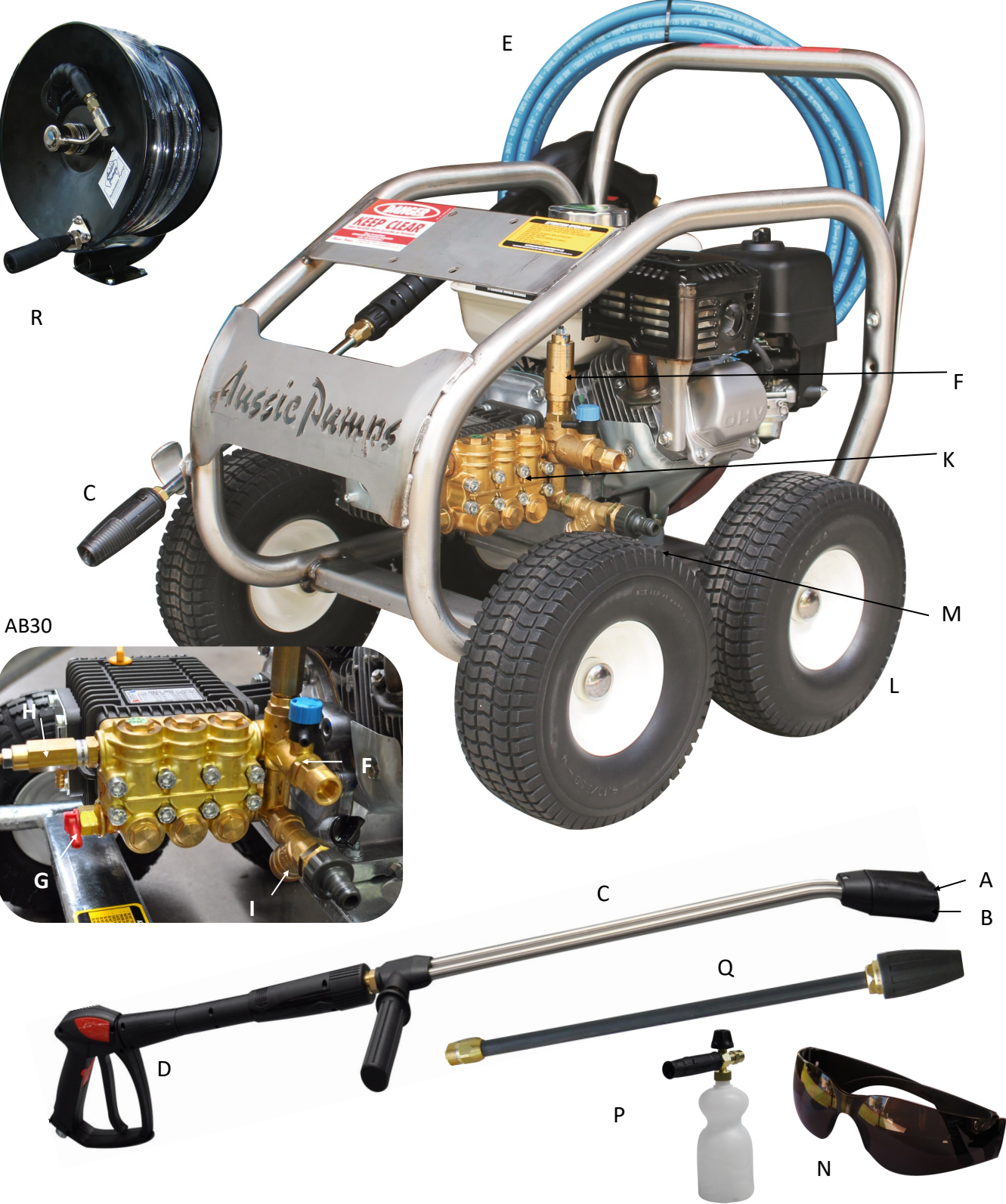
Quality
ISO 9001
SAI GLOBAL

Models: 3,000 psi Scud AB 30
4,000 psi Scud AB 40-GT

Australian Pump Industries

aussiepumps.com.au 02 8865 3500

PARTS IDENTIFICATION

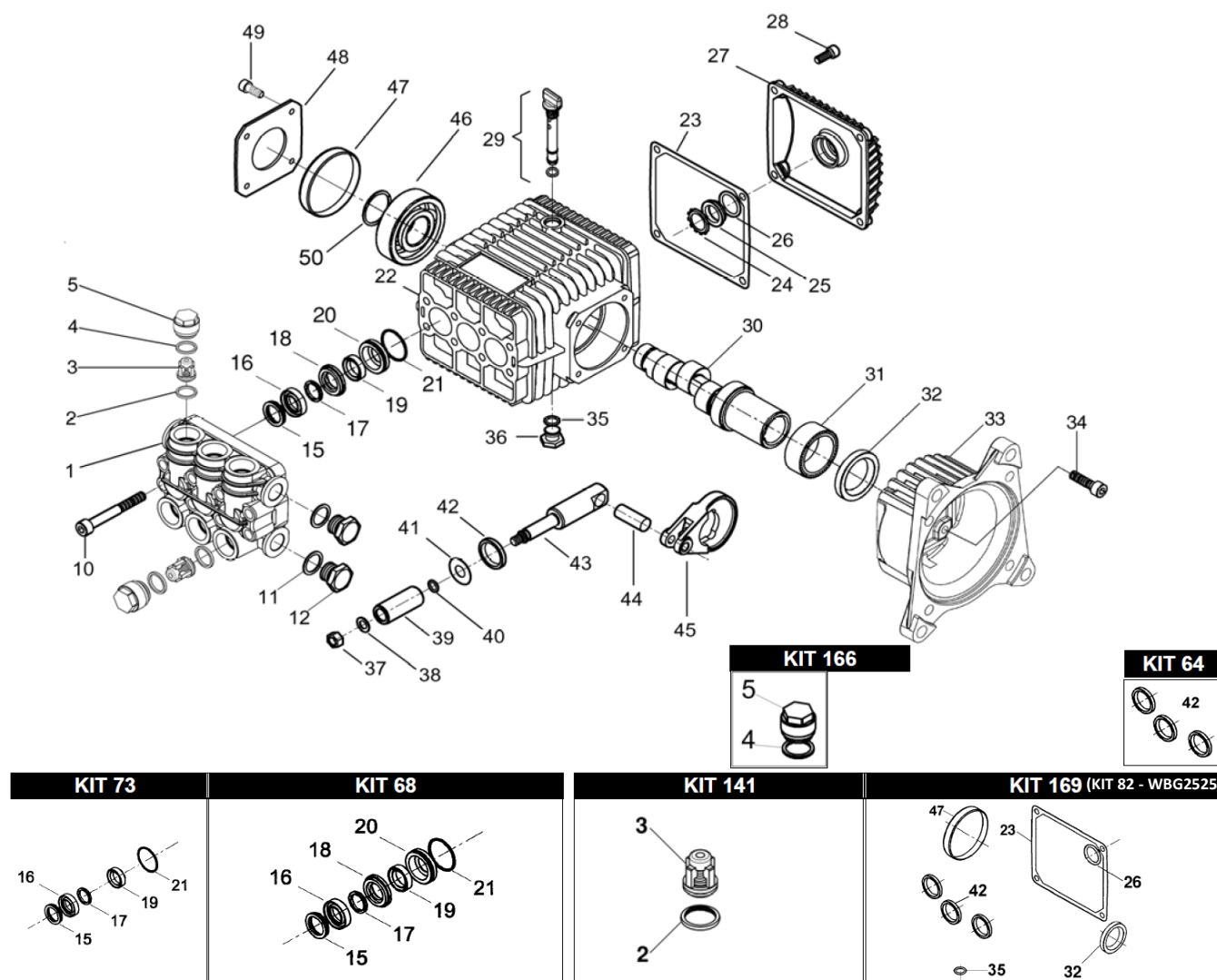


Model	Engine	Pump Model	Pump Pressure (psi)	EWP	Flow rate (lpm)	Frame style	Pump rpm
AB 30	Honda GX200 6.5HP	WBXG3025	3100	4785	10	Four wheel full frame	3200
AB 40 GT	Honda GX390 13HP	TMG4035	4000	6000	13	Four wheel full frame	3200

REPLACEMENT PARTS

Position	Part No	Description	AB30	AB40	List price (EX GST)
Nozzles					
A & B	C915030M	HP NOZZLE (15° ANGLE, TIP SIZE 30)		x	\$26
	C915500MSS	LP DETERGENT NOZZLE		x	\$26
Lance					
C	C4723.45.115	VARIO LANCE	x		\$101
	C3924.01	684MM SS DOUBLE LANCE C/W BOOT		x	\$119
Gun					
D	M4021108007	AL13 GUN WITH MELTED HANDLE& QC	x		\$74
	M4022209003	AL55 GUN WITH MELTED HANDLE & QC		x	\$98
Hose					
E	AHW06M22X2X8	8 MTR HP HOSE (R2, 3,000 PSI) WITH QUICK COUPLER	x		\$159
	AHW06M22X2X10	10 MTR HP HOSE (R2, 4500 PSI) WITH QUICK COUPLER		x	\$198
Unloader					
F	BAPRI-I-35ADJ	UNLOADER VALVE	x		\$315
	BAPRI 40ADJ	UNLOADER VALVE		x	\$362
Thermal Dump Valves					
G	MPA60063050	THERMAL DUMP VALVE 3/8"	x		\$53
	MPA60063070	THERMAL DUMP VALVE 1/2"		x	\$53
Safety Valves					
H	MTM00033003	3600 PSI SAFETY VALVE	x		\$55
	MPA60156000	4000 PSI SAFETY VALVE		x	\$95
Inlet Strainer					
I	AY STRAINER-200	1/2" STRAINER	x	x	\$35
Pumps					
K	BWBXG3025	BERTOLINI PUMP (3000 PSI, 10 LPM)	x		\$1,064
	BTMG4035	BERTOLINI PUMP (4000 PSI, 13 LPM)		x	\$1,291
Wheel					
L	A400015	10" WHEEL WITH FLAT FREE TYRE	x		\$52
	A400016-HD	13" WHEEL WITH FLAT FREE TYRE		x	\$78
	ACAP16MM	Wheel cap	x	x	\$3
Engine Mounts					
M	AENGMOUNTBB300	ENGINE MOUNTS (4 NEEDED)		x	\$28
Other Optional Accessories					
N	AP-SAFETYGLASSES	SAFETY EYEWEAR (Aussie Speedies)	x	x	\$10
P	MPA25152612	LS3 PRO-FOAMER W/1 L BOTTLE	x		\$156
R	AD30001	HOSE REEL WITH 15M HOSE FITTED	x		\$640
R	ADHR40100D	HOSE REEL WITH 30M HOSE FITTED		x	\$970
Q	M4042100004	TURBO LANCE	x		\$178
Q	CTN310-030	TURBO LANCE		x	\$299

PUMP PARTS WBXG3025 (AB30)



Kit No.	Part No.	Description	List price (ex GST)
68	BKIT68	Seal Kit Major (21 pieces)	\$232
73	BKIT73	Seal Kit Minor (15 pieces)	\$141
82	BKIT82	Full Oil seal kit (8 pieces)	\$88
141	BKIT141	Valve kit (12 pieces)	\$60
Item 29	B049832973	OIL FILLER PLUG (1 piece)	\$19
Item 25	B040120322	OIL SIGHT GLASS (1 piece)	\$10
Item 39	B040010182	15MM PISTON	\$99

BERTOLINI®
pumps
4 year warranty

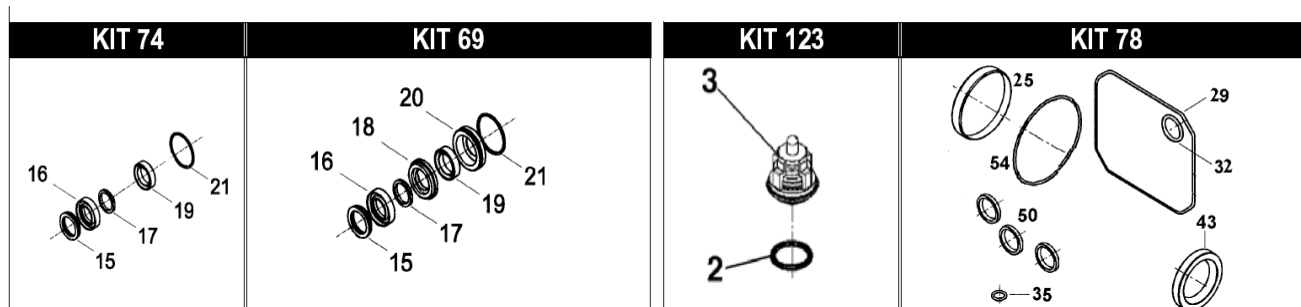
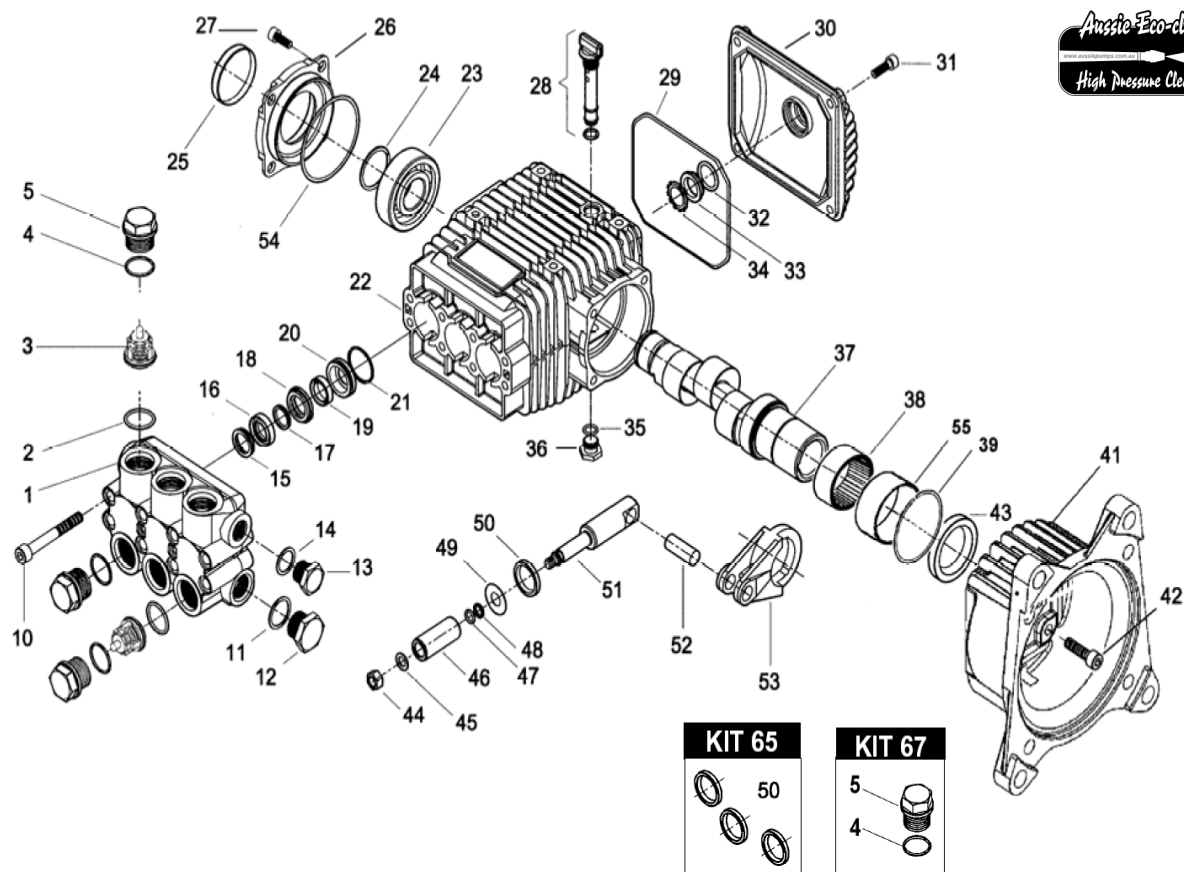
Need guidance on servicing your Bertolini high pressure pump?

Down-load your copy of the Aussie Bertolini Service guidelines from the customer service page of the Aussie website www.aussiepumps.com.au.

Order the right part first time ... specify the pump model number when ordering parts.

Full parts breakdowns available online ... www.aussiepumps.com.au

PUMP PARTS TMG4035 (AB 40 GT)



Kit No.	Part No.	Description	List price (ex GST)
123	BKIT123	VALVE KIT	\$156
74	BKIT74	SEAL KIT MINOR	\$140
69	BKIT69	SEAL KIT MAJOR	\$288
65	BKIT65	OIL SEAL KIT	\$61
78	BKIT78	FULL OIL SEAL KIT	\$87
Item 25	B040120322	OIL SIGHT GLASS	\$19
Item 29	B049832973	OIL FILLER PLUG	\$10
Item 46	B070007182	15MM PISTON	\$115

BERTOLINI®
 pumps
4 year warranty

Need guidance on servicing your Bertolini high pressure pump?

Down-load your copy of the Aussie Bertolini Service guidelines from the customer service page of the Aussie website www.aussiepumps.com.au.

Order the right part first time ... specify the pump model number when ordering parts.

Full parts breakdowns available online ... www.aussiepumps.com.au

TROUBLE SHOOTING GUIDE

FAULT	CAUSE	REMEDY
Pump running normally but pressure low on installation	Pump sucking air Valves sticking Unloader valve seat faulty Nozzle incorrectly sized Worn piston packing	Check water supply and possibility of air ingress. Check and clean or replace if necessary Check and replace Check and replace Check and replace
Fluctuating Pressure	Valves worn Valves blocked Pump sucking air Worn piston packing	Check and replace Check and replace Check water supply and air ingress at joints in suction line Check and replace
Pressure low after period of normal use	Nozzle worn Check valves worn Check valves blocked Unloader valve seat worn Worn piston packing Cracked pistons as a result of dry running	Check and replace Check and replace Check and clean Check and replace Check and replace Replace pistons
Pump Noisy	Air in suction Broken or weak suction or delivery valve spring Foreign matter in valves Worn bearing Excessive temperature of liquid	Check water supply and connections on suction line Check and replace Check and clean Check and replace Reduce temperature
Presence of water in oil	Oil seal worn High humidity in air Piston packing worn	Check and replace Check and change oil twice as often Check and replace
Water dripping below pump	Piston packing worn or plunger retainer worn	Check and replace
Oil Dripping	Travel plug in use on pump Oil seal worn	Replace with breather plug Check and replace if necessary
Unloader valve switches repeatedly when gun is off	Leaking gun and/or pressure pipe. Leaky sleeve Worn out kick-back valve body Leaky seals	Renew gun, seal pressure pipe Renew sleeve Check and renew as necessary kick-back valve plate and seat Renew seals
Leaky piston rod	Defective O-Ring/Support Ring	Renew piston rod seals and examine surfaces in guide case
Leaky by-pass at nominal pressure	Nozzle too small, too much water on by-pass. Worn out unloader valve	Install larger nozzle Examine and renew as necessary.
Pressure gauge shows high pressure fluctuations when shutting off gun	Valve set too high above operating pressure Dirty valve	Adjust the unloader at the operating pressure. Clean valve (removing lime deposits etc). Grease parts before re-installing.
Engine will not start	Out of petrol Engine defect	Fill tank with petrol Return to engine service agent

For engine troubleshooting refer to the Honda engine handbook.